



Regione Campania
Assessorato Agricoltura



Programma
di Sviluppo Rurale
PSR CAMPANIA
2007/2013

**Autorità di Gestione
del Programma di Sviluppo Rurale
2007-2013**

ASSE 2


Legenda


 Sistemi Territoriali Rurali


Spesa Totale Asse2


IMPORTI IN EURO


 Comuni non beneficiati

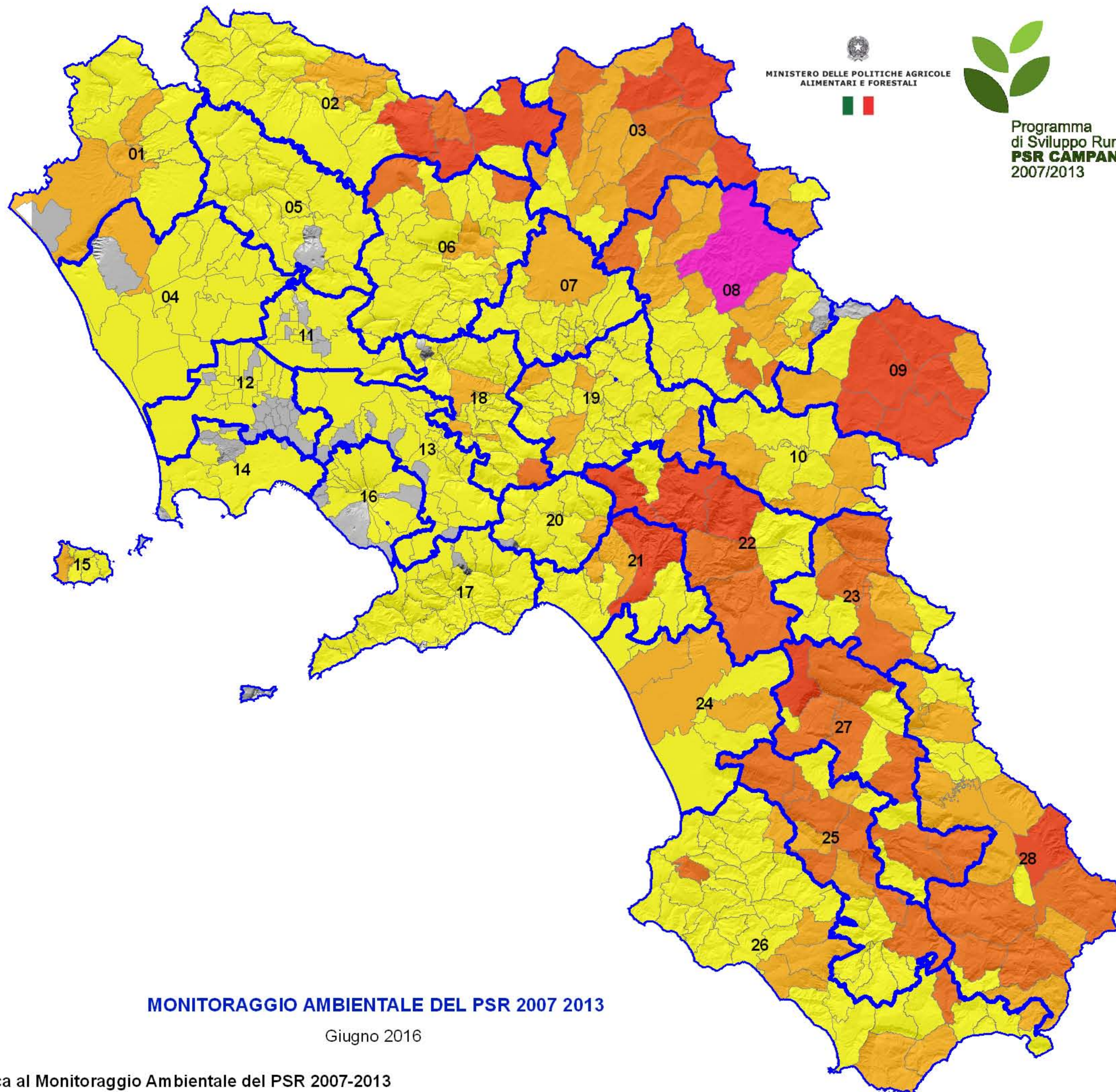
 0,01 - 1859495,23

 1859495,24 - 3465591,26

 3465591,27 - 6776517,78

 6776517,79 - 15320547,83

 15320547,84 - 28086936,20



MONITORAGGIO AMBIENTALE DEL PSR 2007 2013

Giugno 2016

Fonte: SIR AdG PSR - SIAN AGEA

Elaborazione: Assistenza Tecnico Specialistica al Monitoraggio Ambientale del PSR 2007-2013